

INSPIRED GENEROSITY

*2011 Annual Report
to the Community*



GREATER POWESHIEK
COMMUNITY FOUNDATION

We Grow Community Through Giving!

GREATER POWESHIEK COMMUNITY FOUNDATION 2010

BOARD OF DIRECTORS

Officers

F. Austin Jones,	Board President & Executive Vice- President-Grinnell State Bank
Tom Marshall,	Board Vice-President & Former Vice President of Grinnell College
J.T. Anderson,	Business Manager-Grinnell-Newburg Schools
Marilyn Kennett,	Board Secretary & Assistant Librarian-Drake Community Library

Board

Julie Augustine,	RN-Health & Safety Manager, Grinnell Mutual Reinsurance Company
Patti Amador-Lacson,	Assistant Dean of Admissions-Grinnell College
Brandon Davis, Ph.D.,	Davis Psychological Services, PC
George Drake,	Retired History Professor & Former President- Grinnell College
Heidi Durbin,	Dean of Students-Grinnell-Newburg High School
Shannon Fitzgerald,	CFO & Controller-Claude W. & Dolly - Ahrens Foundation
Jack Gustafson,	Former Vice-President of Manatts Inc.
Chris Hansen,	Director, Audit Services-Grinnell Reinsurance Co.
Al Henderson,	Plant Manager, Monsanto Co.
Nancy Maly,	Retired Administrator-Grinnell College
Bob Mann,	Executive Director-Mayflower Homes, Inc.
Martha Pinder,	Managing Editor-The Grinnell Herald Register
Jack Robertson,	Private Investor, Photographer & Retired Biologist
Don Schild,	Attorney at Law

Inside...

- Your foundation & Your Inspiration
- Letter from the President
- Inspired by Progress
- Inspired by Collaborations & Endowments
- Inspired by Learning & Our Kids Future
- Inspired by Philanthropy & Family
- Inspired Donors
- Inspired Ways to Give
- Inspired Learners
- Inspired Gifts & Trust

Your *Foundation* & Your *Inspiration*

The Greater Poweshiek Community Foundation's donors are champions of education, faith, arts, the environment, health, and so much more. Whatever the inspiration, we welcome the opportunity to partner with those who care for our community by making the most of their generosity.

The role of the community foundation is to inform people about the critical issues facing their community and to inspire them to act in both large and small ways.

What is a Community Foundation?

A community foundation is a tax-exempt non-profit organization created by and for people of a specific geographic area that serves as a vehicle to connect people who care with causes that matter. To carry out the objectives of donors, contributions from individuals, families, corporations, organizations, private foundations, and governmental entities are carefully invested for maximum return and growth, with income from endowed funds used to make grants in support of programs and organizations that benefit the community.

Mission: We serve the community and enhance quality of life by:

- helping people accomplish their charitable giving objectives
- managing and preserving funds entrusted to us
- distributing investment earnings in the form of grants

Vision : We grow community through giving.

Staff:

Delphina Baumann Gift Planning Coordinator
Nicole Brua-Behrens Coordinator of Programs
Heidi Pearson AmeriCorps VISTA Program Assistant

The National Standards Seal by our name indicates official confirmation from the Council on Foundations that we have met the most rigorous standards in philanthropy. It affirms our commitment to financial security, transparency and accountability.

The Greater Poweshiek Community Foundation received this seal of approval in January 2010.



LETTER FROM THE PRESIDENT



Since 1989 the Greater Poweshiek Community Foundation has quietly helped to make good things happen in Grinnell and beyond.

I am so pleased to share the 2011 Greater Poweshiek Community Foundation (GPCF) Annual Report with our donors, partners, and volunteers. It is such an honor to work for such a great organization built to improve our communities for perpetuity. And this year just proved it by your philanthropic support and countless volunteer hours made in 2011. It was just an amazing year for the Foundation, its partners and the Poweshiek County area.

This report contains information about donors who are making meaningful gifts both monetarily and through the investment of their time. The board also wanted to highlight our non-profit partners who are impacting the area and the world. We support non-profits who are feeding the hungry, providing services for at-risk families, enhancing the quality of life in the Grinnell area, supporting local K-12 education and bringing awareness about early childhood literacy.

We are committed to understanding the needs of our communities and connecting to the non-profits that address those needs. In 2011, the Grinnell Area Arts Council and The Mayflower Community established agency endowment funds at the community foundation so that donors to these funds are eligible to receive the Endow Iowa Tax Credit.

The Community Foundation is the place for inspired giving. The availability of the above mentioned tax credit moved an anonymous donor to setup a designated fund for the benefit of the Grinnell Regional Medical Center. The Endow Iowa Tax Credit is only available to Community Foundations that meet the strict requirement of the U S Council of Foundations. The board is so proud to be part of this program and the good it a can do for us all. In 2011, donors gave over \$550,000 to endowment funds at the community foundation.

In November 2011, GPCF launched its first “Give Grinnell Week”. The event was a joint fundraiser for Greater Poweshiek Community Foundation and our partner organizations. The goal was to raise \$50,000. Give Grinnell exceeded our expectations when the Foundation and our non-profit partners received \$93,844.71 in new donations and \$39,958.33 in pledge payments received during a one week time period! We were humbled and inspired by the philanthropic spirit of our friends, neighbors, and co-workers.

The Greater Poweshiek Community Foundation staff and board are here to help inform the community about critical issues and needs and to inspire both large and small acts of good will. Please consider what inspires you and how you could make a difference in your community. Then let GPCF help you reach your personal giving goals.

In appreciation,

A handwritten signature in black ink, reading "F. Austin Jones". The signature is written in a cursive style with a large, stylized initial "F".

F. Austin Jones, GPCF Board President

Inspired by Progress

In 2011, Greater Poweshiek Community Foundation added a staff member to the organization. Heidi Pearson joined the staff as the Program Assistant funded through a one year grant by the Americorps Volunteer In Service To America (VISTA) program, secured by the Iowa Council of Foundations (ICoF) to support community foundations in capturing the transfer of wealth and building capacity of local community foundation volunteers to grow endowments. Pearson was named one of the “20 Under 40” Award recipients by the Grinnell Chamber of Commerce at the annual Chamber dinner. This award recognizes community members for their commitment to community, professional accomplishments, and making a difference through volunteerism.



GPCF celebrated its **Second Annual Spirit of Giving Dinner** on October 12th, 2011 with approximately 170 donors in attendance. The Spirit of Giving Award was presented at the dinner to Arthur Heimann, a person who embodies the principals and the other-centeredness that make lives better for others....The true Spirit of Giving.

Connie Marshall Spirit of Giving Award Winner announced. Arthur Heimann received the Connie Marshall Spirit of Giving Award for his substantial contributions to the Grinnell community. Heimann has had a long distinguished career of serving others. His service includes: Colfax, Iowa School Board and city council, Boy Scout leader, board member of Central Iowa Residential Services Inc. (CIRSI), two terms of service on the Older Iowan's Legislature and the Hawkeye Valley Area Agency on Aging, former president of the Grinnell Senior Chamber of Commerce, a twenty year veteran of the Grinnell Kiwanis Club, founding member of the Community Education Council and early supporter of the Second Mile Organization. As part of the recognition, Heimann received a \$1,000 award, which was donated to two charities of his choice: Second Mile Building Campaign and the Mayflower Human Needs Endowment.



Imagine Grinnell welcomed a new executive director in 2011. **Sarah Smith** has been an active member of the Grinnell community for several years. Smith volunteered her time with several community organizations, including Grinnell-Newburg Educational Excellence (GNEE), Dollars for Scholars, and the Grinnell Regional Medical Center Auxiliary Board. “I am honored and thrilled to be the new executive director of Imagine Grinnell,” Smith said. “This organization has created and continues to create sustainable living for Grinnell.”

Inspired by *Progress*

GPCF embarked on an ambitious initiative to engage the community in focusing on the future of Grinnell. GPCF serves as a steering committee, along with the Claude W. & Dolly Ahrens Foundation, for the **Build a Better Grinnell Community Assessment**. This collaboration between GPCF and several local non-profit organizations, including MICA, Grinnell Regional Medical Center, Grinnell Regional Public Health, the City of Grinnell, the Chamber of Commerce, and the Grinnell-Newburg school district is aimed at gaining response from community members about the types of projects the community needs to work on in the next five to ten years. GPCF began Phase I in 2011 by developing the toolkits to be distributed throughout the community.



Three new funds were started in 2011. The **Grinnell Area Arts Council Endowment Fund** will provide a permanent fund for operating support for Grinnell Area Arts Council. The distributions from this fund will go to service GAAC's public, charitable, scientific, literary, and educational purposes. An anonymous donor created the **Grinnell Regional Medical Center Endowment Fund**. This fund will provide support for patient services and programs. The **Mayflower Human Needs Endowment Fund** was established to help the Mayflower Community continue its work in providing an affordable continuing care retirement community that strives to meet the needs of all residents. The earnings from this fund will be used to help residents in need of financial assistance that are unable to pay the full cost of their care.

Two new scholarship funds were created in 2011. The **Adelberg Family Scholarship** was formed for a graduating senior student who demonstrated excellence in science and mathematics and plans to pursue his or her post-secondary education in mathematics, physics, chemistry, or biology. The **Fitzgerald Family Scholarship** was created to provide a \$500 scholarship for a graduating senior student planning to attend an accredited institution of high learning who demonstrated a need for financial aid and is a good citizen who sets a positive examples for others.

Grinnell Area Kids Against Hunger held their first annual Friends of Kids Against Hunger Mailing to raise money to help teams with the cost of taking part in the packaging events. They raised \$2,210.00 to be used to cover the participation fee for both individuals and teams.



Inspired Collaborations

The Community Foundation takes part in the Community Support Services Program by the Claude W. and Dolly Ahrens Foundation, which provides nonprofits with shared office space and personnel for greater cost savings and collaboration, allowing them to focus on their individual mission.



Communities for Literate Iowa Kids (CLIK)



Grinnell-Newburg
Dollars for
SCHOLARS.

Community Education Council

Grinnell High School Alumni Association

Dollars for Scholars



Grinnell Newburg Educational Excellence (GNEE)



Imagine Grinnell



Kids Against Hunger



Poweshiek County Empowerment



Second Mile Building Campaign

*Inspired by **Endowments***

ENDOW IOWA offers significant tax advantages for Iowa taxpayers.

With Endow Iowa, you can give and receive.

*In 2011, donors contributed **\$550,869.60** to endowed funds at GPCF.*

CHARITABLE GIFTS MUST BE MADE:

- To a qualified Community Foundation.
- To a permanent endowment fund (existing or newly established) within Greater Poweshiek Community Foundation.
- For the benefit of one or more Iowa charitable causes.
- By individuals, corporations, or financial institutions

THE TAX CREDIT:

- Is 25% of the gift amount for each donation. The tax credit is in addition to federal income tax deductions for charitable gifts.
- Is issued on a “first come, first serve” basis with approximately \$4.5 million in tax credits available each year.
- The cap per person is \$227,590 per person or \$455,180 per couple.

Endowments held at GPCF that are eligible for the Endow Iowa Tax Credit include:

**Adelberg Family Scholarship Endowed Fund
Anna Marie Emry Endowment Fund
Connie Marshall Administrative Endowment Fund
Dr. Kevin W. Sterk Elementary Student Needs Endowment Fund
Grinnell Area Arts Council Endowment Fund
Grinnell-Newburg Dollars for Scholars Endowment Fund
Grinnell-Newburg Educational Excellence Endowment Fund
Imagine Grinnell Endowment Fund
Iowa Transportation Museum Endowment Fund
Grinnell Historical Museum Endowment Fund
Grinnell Regional Medical Center Endowment Fund
Lutheran Services in Iowa, Inc. Endowment Fund
Mayflower Human Needs Endowment Fund
The Community Fund for Poweshiek County**

Inspired by Learning

At Bailey Park Elementary, teachers are finding creative ways to use technology in the curriculum. Through the **Grinnell-Newburg Educational Excellence (GNEE) Mini-Grant Program** the kindergarten teachers were awarded \$3,000 to purchase six iPads. GNEE is a non-profit partner of Greater Poweshiek Community Foundation.



Used to assist in reading, spelling, math and writing lessons, teachers and students found the iPads especially helpful in allowing teaching to be tailored to individual children's reading and math levels. Using iPad applications, students can work at their own level and pace and can be assigned additional practice on specific skills or more challenging curriculum than the standard level if needed. So far, the initiative has been successful: besides continuing to support digital literacy learning among students at Bailey Park, MAP scores in reading have also increased in the first year iPads have been in use .



Imagine Grinnell, a partner non-profit quality of life organization of the Greater Poweshiek Community Foundation, granted Davis Elementary \$1,500 in 2011 allowing every 4th grader in the Grinnell-Newburg school district to attend an annual three-day YMCA Camp in Boone.

The trip is designed to reconnect children to nature and to educate children with offering outdoor classes focusing on conservation and environmental issues.

The Imagine Grinnell Board believes that this program matches their mission to promote a healthy environment for all Grinnell citizens by raising awareness of environmental issues and to encourage green living at a young age.

Inspired by *Our Kids Future*

In 2011 the **Grinnell-Newburg Dollars for Scholars** program, a GPCF non profit partner organization, continued to raise money for its graduates year round with the following fundraising efforts: In February, DFS helped the Grinnell Rotary serve an annual soup supper. \$1,000 of the proceeds were donated to Grinnell-Newburg Dollars for Scholars.



Letters were sent in March to Grinnell-Newburg alumni requesting monetary contributions.

Donations of \$6,866 were received. The annual Dogs for Dollars event was held in September in conjunction with the annual Homecoming parade, receiving donations of \$11,148.

Thanks to the generosity of our donors, DFS was able to increase the minimum scholarship this past year from \$200 to \$250 for every Grinnell-Newburg graduate who completes an application. With the rising cost of books, tuition, lab fees, etc., Grinnell-Newburg Dollars for Scholars will continue to strive to increase the minimum amount.



The Poweshiek County Empowerment board, a GPCF non-profit partner organization, received state funding for projects that improve the quality of life for families with children ages birth to five. In fiscal year 2012 (July 2011-July 2012) Poweshiek County Empowerment granted \$201,014 to 11 different projects across Poweshiek County.

Empowerment funded preschool scholarships for low-income families in six different schools, programs for MICA, bussing for preschool students from all over the county, and intensive home visit program for at-risk families. Each year the Iowa Legislature appropriates funds to this worthy program to the benefit of families across Poweshiek County.

Inspired by *Philanthropy*

Give Grinnell Week- The first annual **Give Grinnell Week** fundraising campaign was November 14-18. GPCF received \$132,703.04 in donations, including matching gifts, during the week. President F. Austin Jones said that this far exceeded the foundation's goal of \$50,000 in a one week time period.

The foundation received two challenge grants to help stimulate local giving: one grant from an anonymous donor matched dollar-for-dollar all gifts to the GPCF Administrative Funds that covers foundation operating costs; and the second grant from Jewel W. Kintzinger and Burtwin Day matched gifts to non-profits with matching funds directed to the Administrative Fund.

New donations to Greater Poweshiek Community Foundation and the non-profits served totaled \$93,844.71 and pledge payments received during Give Grinnell Week were \$36,958.33. "These matching gifts offered community members the opportunity to double their giving and our community came through with flying colors," Jones said. "Our community support was overwhelming and it is one more reason that we are the envy of many communities in Iowa."



Since May 2011, the **Second Mile Building Campaign** has been underway with the goal of raising \$200,000 to expand their retail space from 5,000 to 7,700 square feet. This expansion will allow the organization to accept donations of furniture, clothing, and household items that all families need. Second Mile gives donors an outlet for unwanted items, enables local residents to purchase needed items at low garage sale prices year-round, and provide items free of charge for those in need. The picture at left is of the new addition to the building, completed in January, 2012.

Inspired by *Family*



Dr. Kevin W. Sterk Elementary Student Needs Endowed Fund

A strong commitment to Grinnell and the memory of their son prompted Ginger and Glenn Sterk to set up an endowment to benefit students in the lower elementary schools in Grinnell through the Greater Poweshiek Community Foundation.

In July of 2011, the Sterks contributed \$10,000 to create the Dr. Kevin W. Sterk Elementary Student Needs Endowed Fund. The fund was established to provide nutritional support and physical needs support to students in the lower elementary schools in Grinnell. Since Dr. Sterk attended the Grinnell Newburg school system for thirteen years and graduated from Grinnell College, his parents thought it would be appropriate to establish the endowment fund to benefit the younger students in Grinnell. "This is something he would have been passionate about" said Glenn and Ginger.

The Dr. Kevin W. Sterk Elementary Student Needs Endowed Fund was developed in partnership with the Grinnell-Newburg elementary school administration, the Sterk Family, and Greater Poweshiek Community Foundation. "The needs become very great, especially in the winter time," said Sarah Seney, principal of Bailey Park and Fairview Elementary schools. "We have numerous students who don't have snow pants, boots, jackets, hats, gloves, etc. for the winter season.

Monsanto, Glenn's employer, recognized the advantages this fund offers elementary students and has given a sizable contribution to the fund. "We wanted to create this fund for the little kids who can't look out for themselves," said Ginger, "They need someone to look after their best interests."

Inspired Donors

DONORS WHO HAVE GIVEN TO PARTNER ORGANIZATIONS, FUNDS AND
ENDOWMENTS THROUGH GREATER POWESHIEK COMMUNITY FOUNDATION

4-H Club	Trudy & Allan Asplund	Claudia Beckwith & Bill
Gerald & Sara Adams	Roberta Atwell	Ferguson
Arnold & Harriet Adelberg	Julie Augustine	Edmund & Betty Behnke
Delmar Adkins	Ed & Julie Austin	Susan Behrendt
Chad Agnew	Awards Unlimited	Russell Behrens & Nicole
Dan & Nancy Agnew	Richard & Marsha Bachman	Brua-Behrens
Bill Ahrens	Chris Bair & Meg Jones Bair	Susan J. Beise
James A. Ahrens	Glenn Baker	Phyllis Bellis
Sue Ahrens	Michael & Barb Baker	Walter & Nancy Bender
Ahrens Park Foundation	Mr. & Mrs. Ronald Baker	Mr. & Mrs. William Bennett
Kristine Allen	Sarah Joan Baker	Stephen Bennett
Michael & Jill Allen	Tim & Sherry Baker	Valerie Benoist
Allen Financial Group	Sigmund & Judi Barber	Richard. S. Berman
Alliant Energy	Bob & Marilyn Barnes	Charles & Esther Bethel
Jonathan Andelson & Karin	Sam & Sue Barnes	Alice Beyer
Stein	Cynthia Barrera	Rick & Audrey Bierman
J.T. & Tara Anderson	Bates Flowers &	Matthew & Kimberly Bigler
Lucille Anderson	Greenhouse/Marcia's Trim	Bikes to You
Mr. & Mrs. Edgar Anderson	Julie Baumann	Bill's Jewelry Shop
Bill Arms	Robert & Miriam Baumann	Gary & Kathleen Birdwell
Todd Armstrong	Scott & Delphina Baumann	Barney Bishop
Gordon & Karen Ashby	Bearcreek Sportsman Club	Cory & Alicia Blankenfeld
Ashing Machine & Tool Co.	Dave Beaty	William Bloom
ASI Signage	Alyce Kae Beck	Rachel Bly & Bob Hamilton
Susan Asinger	David Beck	Clem & Leona Bodensteiner

Inspired Donors

Peter & Diane Boeke	Larry Bryan	Mike & Lynn Cavanagh
Gordon & Alicemary	Lynn & Jeanette Budding	Robert & Annette Cech
Borthwick	Sue Buffum	Helen Charles
Janet Bowen	Joanne Bunge	Donald Charnetski
Warren & Carolyn Bower	Lowell & Suzanne Bunker	Joan Charnetski
David & Bridget Brandt	Greg & Bonnie Buntz	Jonathan & Jeanmarie
Jeff Breeden	C. Allan Burch	Chenette
Alice Breemer	Don & Terry Burkhead	Keith & Sue Cheney
Dorothy Breuning	Charlotte Burnell	Chester Newburg
Bob Brierly	Sondi & Loren Burnell	Congregational Church
Brighton Consulting Group Inc.	Angela Burnham	Christian Science Society
Norma Brignon	Raymond & Judy Bush	Kenneth & Phyllis
George & JoAnn Britton	Larry & Diana Buter	Christiansen
Frederic Brock	Ruth Butler	Church Women United of
Gene & Shirley Broders	C & K Transfer	Grinnell
Charles & Sandra Brooke	Robert & Nancy Cadmus	Cincinnati Insurance
Mary Brooner	Laura Calderwood	Company
Barbara Brown & David	Douglas & Virginia Cameron	Tom & Lisa Cirks
Lapotto	Gordon Canfield	Cirks Financial Services
Douglas A. Brown	Cargill, Inc.	City of Grinnell
Jonathan Brown	Janet Carl & Greg Johnson	Class of 1942
Brown Chiropractic	Roger & Diane Carlon	Class of 1943
Brown's Shoe Fit Company	Meg Lannom Carr	Class of 1979
Pete Brownell & Helen	Carriage House B & B	Claude W. & Dolly Ahrens
Redmond	Eric Carter	Foundation
Brownell Family Foundation	Casey's General Stores	Claude W. Ahrens Charitable
	Doug & Lorna Caulkins	Trust

Inspired Donors

David & Diana Clay

Gloria Clay

John Clayton

Ronald & Judith Clayton

Curtis & Tara Clemen

Charlie Clements

Terry & Lynn Cline

Anne Clotfelter

Beryl & Mary Lou Clotfelter

Rob & Nancy Clower

Brooklyn Ruritan Club

Kay Cmelik

Edwin & Karen Cochran

Andrew & Angie Cody

Larry & Beverly Coghlan

Patrick & Jennifer Cogley

JoAnn Cogley Hunter

Edward Colliton

Deb Collum-Calderwood

Community First Credit Union

Community Education Council

Dean & Fran Conn

Anita Conway

Dennis & Glenyce Conway

Judy Cook

Mary Cook

Scott & Wan-Ying Cook

Francene Coons

Craig & April Cooper

Larry & Sandra Cooper

M. Jeanette Copeman

K.C. & Karla Cornish

David Coster

Jefferey Couch

Kenneth & Edna Crandall

David & Linda Cranston

Louise Crews

Criswell Propane

William Crosby

Courtney Cummings

Dustin Cummings

Marty Cummings

David & Francesca

Cunningham

Jim & Joan Cunningham

Ken & Ruth Dalldorf

Peter Daniolos & Raynard

Kington

Dale Evalena

Danish Maid Bakery

Brandon & Jennifer Davis

Janet & Brooks Davis

John Davis

Miriam Davis

Randy Davis

Davis Elementary School

Davis Psychological Services

P.C.

Burtwin Day & Jewel

Kintzinger Day

Chad & Hilary Deike

Dental Associates

Cynthia & Ron Deppe

Ernest Deppe

Jeff & Harriett Dickey-Chasins

Eleanor Diehl

Arline Dieterich

Carl Dillon

Fred & Vicki Dillon

Robert & Susan Dimit

Elizabeth Dobbs

Dollars for Scholars

Donaldson Company, Inc.

Paul & Sheila Donovan

Jerry & Joyce Doonan

Roy & Darlene Doorenbos

Michael & Vanessa Doty

W. Houston Dougharty

Barbara & Dean Douglas

George & Sue Drake

Drummond Club

Duane Bissen Agency, Inc.

Duane & Mitzi Dufoe

Charles & Mari Duke

Inspired Donors

Janey Dunham	Family Dentistry	Dennis Freeborn
Terry Dunlap	Family Medicine	Nancy Freeborn
Jim Dunne & Sara Hegg-	Fellowship of Christian	Miriam Freiter
Dunne	Athletes	Christopher French
Bob & Terri Durand	Diana Fenner	Clyde French
Heidi Durbin	Romaine Fenner	Gene & Sara Fuelling
David & Laura Durr	Jim & Janet Ferguson	Michael & Karri Furness
Mr. & Mrs. Lloyd Durr	Laura Ferguson	James Fyfe
Julie & David Eberbach	Susan Ferguson	Lamoyne Gaard
Len & Diane Eberhart	Linda Ficek	Tom & Susan Gallo
Vincent Eckhart & Liz	Jeff & Gina Finch	Evelyn Garwood
Queathem	Wes & Marilyn Finch	Cecille Gerber
Gene Edlen	First Baptist Church	Hugh German
Edward Jones Investments	First Friends Church	Everett & Verna Gerrish
Iona Edwards	First Presbyterian Church	Garnet L. Gertsma
Marie Eisenman	Barbara Fisher	James & Kim Gilbert
Caleb & Tina Elfenbein	Shannon Fitzgerald	Girl Scouts of Greater Iowa
Doug & Peggy Elliott	Timothy & Monica Fitzgerald	Gladys Larsen Trust
Molly Ellis	Fitzgerald Family Scholarship	Grinnell Newburg Educational
Irene Engelmann	James & Amy Flannery	Excellence
Fred England	Rita Foley	Carol Gnerer
John Ensign	Bill & Tami Ford	Mark & Donna Godar
Karla Erickson	Tom & Anita Ford	Rich & Laura Gogg
Luther & Jenny Erickson	Clayton Francis & Ann Ellis	Neill & Becca Goltz
Shane & Roberta Estes	William & Lori Francis	Bernice Goodwin
Thomas & Rey Evans	Family	Richard Gosselink
Char Ewan	Barbara Franz	Sarah & Jacob Gosselink
Robert & Sandra Falck	Roger Fread	Troy & Julie Gosselink

Inspired Donors

Gosselink's Gifts & Interiors	Grinnell Mutual Group	Jackie Halverson
Grace Community Church	Foundation	Rachel Hall
Victor & Wilma Graden	Grinnell Mutual Reinsurance	Clovis Hallman
Curt & Melissa Graff	Company	Dusty & Linda Hamilton
Burt & Tracy Graham	Grinnell Regional Medical	Sarah Hamilton
Mildred Graham	Center	Montie & Betty Hammond
Susanne Graham	Grinnell Rotary Club	Mary Jo Hangartner
Warren & Terese Grant	Grinnell State Bank	Caleb Hansen
Francene Graves	Grinnell United Methodist	Chris & Jodi Hansen
Margery Graves	Church	Rachel Hansen
Great Western Bank	Grinnell Veterinary Clinic	William & Suzy Hansen
Lucille Green	Jerry & Carolyn Grosenbach	Diane Harrington
D. Ruth Greenwald	Dan & Jan Gross	David & Jacqueline Harris
Stanley & Gail Greenwald	Virgil & Patricia Groth	Tom & Betty Harris
Grinnell Area Arts Council	Karen L. Groves	Dwight & Kimberly Harsselaar
Grinnell Area Garden Club	Marjorie Groves	Justin & Christina Harter
Grinnell Bicycle Club	Michael Groves	Paula Hatch
Grinnell Christian Church	Brian & Michelle Gruhn	Ed & Bev Hatcher
Grinnell College	Scott Gruhn	Alan & Susan Hattel
Grinnell College-Student	Bonnie Grunhaupt	Ron & Joyce Hauser
Government Association	Jack & Walda Gustafson	Gregory & Diane Hawkins
Grinnell College-Community	Richard & Carolyn Gustafson	Elizabeth Hays
Service Program	Illa Guthrie	Frank & Gail Heath
Grinnell Eye Care	Dennis & Tommy Haas	William Hedlund
Grinnell Firestone	Ann Haase	Arthur Heimann
Grinnell Girls Camp-	Gerald Hagen	Arnold & Joan Heimsoth
-Association of Iowa	Joyce Halblom	Brian & Nancy Heineman
Grinnell Insurance Agency	Otto & Effie Hall	Allen & Debra Henderson

Inspired Donors

Nancy S. Hendrickson	Peter & Kathy Jacobson	Mack & Susie Jorth
Eugene & Kathleen Herman	Brent & Dawn Jaeger	Sandy Juhl
Betsy & Craig Hessel	Charles & Joyce James	Wendy A. Kadner
Robert Higdon	Kelli Jantz	Donald & Carol Kaisand
Roger Hill & Vida Praitis	Jane Jarvela	Norma J. Kaisand
Ken & Susan Hiner	Tom-Tsvi Jawetz & Jennifer	Vernadine Kaisand
Daryl Hohl	Hunter	John & Amy Kalkbrenner
Robert & Katheryn Hoisington	Brian & Leslie Jaworski	Marjory J. Kaloupek
Lois Holmes	Jeld-Wen Door Systems	Marrina Kaloupek
Barb Honold	Jeld-Wen Foundation	Charlotte Keating
Marvin & Ruth Honold	Clark & Annie Jensen	Mr. & Mrs. Donald Keller
Roger & Dixie Honold	Jensen Optometrists, P.L.C.	John Kendrick
Todd Honold	Brian & Rosemary Jobes	Marilyn & Mark Kennett
Betty Jean Hotchkin	Cornelia Johnson	Cynthia Kenyon
Linda Hotchkin	Kenneth & Donna Johnson	Bette Kersey
Mike & Doris Hotchkin	Mark & Melissa Johnson	Hannah Key
Karen Huftle-Worley	Susan S. Johnson	Kids Against Hunger
Chad & Melissa Hull	William P. Johnson	Beverly Kies
Ruth Hull	Doug & Mindy Johnston	Berta Kim
Karen Hunt	Elsie Johnston	Kary & Kathy Kinmonth
Chris & Judy Hunter	Ronald & Sharon Johnston	Billy Jean Kinnaird
Hy-Vee	James Jolly & Leslie Gregg-	Earl & Pamela Kinnaird
Imagine Grinnell	Jolly	John Kintz
Immanuel Lutheran Church	F. Austin & Kim Jones	Jessica & Seth Kite
William Ingersoll	Jean Jones	Kiwanis Club of Grinnell
Gretchen Isenberg	Jolene Jones	Mary Klemm
Jonathan A. Ismail	Patricia Jones	Kirsten Klepfer
Teresa Iverson	Paul & Sandra Jones	Alan & Ann Knaack

Inspired Donors

Rita Cecilia Knight & Gary Mertens	Eugene & Deloris Lang	Don Louden
Jeffery & Heidi Knobloch	Steve & Karen Langerud	Gordon & Dorothy Louden
Imogene Knowles	Delmar & Evelyn Larsen	Warren & Kathryn Louden
Rev. Herb & Anne Knudten	Gary & Valorie Larsson	Kristin Lovig
Trudy Koch	Frances Lash	Stephen & Janice Lovig
Loren & Peggy Kolpin	Heidi Lauritzen	Skip Lowe
Mark & Chelsey Kolpin	Stanley & Linda Laverman	Brenda Lowry
Paul Kolpin	Leo & Barbara Lease	James & Betty Ludden
James Kottmeier & Cheryl Chase	Terri Leedom	Mabel Madill
Hutch & Julie Kracht	Russelle Jones Leggett	Trudy Magurshak
Kram Luap LLC	Rev. Selva Lehman	Michael Mahaffey
Margaret & Brent Kraske	Mark Levandoski & Monica St. Angelo	Malcom Lumber & Hardware, Inc.
Kay Krause	Jean Libbey	G.C. & M.D. Maloy
Susan Kriegel	Lavern & Colleen Lidtka	Allan & Nancy Maly
Tom & Karla Kriegel	Dr. H.R. & Rhea Light	Manatts Inc.
David & Lisa Krumm	Lincoln Savings Bank	Bob Mann
Doug Kruse	Todd Linden	Sonya Margerum
Lyle & Judy Kuehl	Linder Tire Service	Gary & Sally Maring
Miriam Kujac	Lynette Lindholm	Leila Maring
Larry & Nancy Kunce	Lions Club	Mariposa Farms Inc.
Robert & Sharon Kuntz	Lolya Lipchitz & Harold Kasimow	Tom Marshall
Tom & Alesia Lacina	Patty Lloyd	Charlotte Martin
Jerry & Marguerite Laehn	Janice Logan	Dean Martin
Sharon Lahn	Lance & Debra Longman	Milton Martineau
Jerry & Dorrie Lalonde	Bryan & Amy Lore	John & Dorothy Martinek
Denise Lamphier & Charlie Clements	Loucks/Buren Orthodontics	Elaine Marzluff
		Mayflower Homes Foundation

Inspired Donors

Helen & Malcom Mayo	Bill Menner	Thomas & Emily Moore
Maren McDougal	Steve & Kathy Menninga	Bob & Carol Moritz
Donnavee McAllister	Katya Gibel Mevorach	Jack & Jackie Morrison
Brad & Teresa McCall	Duane & Jo Meyer	Rosemary Morrison
McCaw Family Medicine	Dorothy Meyers	Jeanette Moser
Kent & Katherine McClelland	Debbie Miller	Erik & Larissa Mottl
Owen McClure	Donna Miller	Wayne & Helen Moyer
Douglas & Kay McDonald	Matt Miller Family Dentistry	Greg & Janey Muckler
Lori McDonald	P.C.	Berneil Rupp Mueller
Howard McDonough	Martin Minelli	Amanda Mularkey
Susan McDonough	Brian & Ramona Mitchell	Mickey Munley & Nancy
David McDowell	Forrest & Joan Mitchell	Owens Munley
Raymond McDowell	Orlan & Verlene Mitchell	Jack & Jan Mutti
Lee & Jane McFee	Roger Mitchell	Karen Neal
Robin McGinnis	Ruth Mithelman	Sandra Nearmyer
Kellie & Brett McGriff	Ruben Moffett	Don Nebergall
John & Susan McIntyre	Sandy & Betty Moffett	Janet & Duane Neff
Gary & Patty McKay	Joan Mohan	Suzanne Nekola
Shawn & Cathy McKay	Philippe Moisan & Claire	David & Kris Ness
Pauline McKenna	Hassett-Moisan	Ryan & Jennifer Ness
Andy McKibben	Monsanto Fund	Cheryl Neubert
Matthew & Leslie McKnight	Montezuma Manufacturing	Newburg Chester Women's
Lawrence & Shannon McNaul	LuAnn Montgomery	Fellowship
Sharon Mealy	Mark Montgomery & Irene	Connie & Dave Newport
Tammy & Chad Means	Powell	Carol Nielsen
Ellen Mease	Melody Montgomery	Lucille Nikkel
Medicap Pharmacy	Raul & Lenore Montague	Larry J. & Margaret
Barbara Meek	Lester Moore	Niswander

Inspired Donors

Carol Norris	Joann Pearson	Poweshiek County Retired
Robert Norton	Mark & Mary Pedersen	School Association
Ron & Jennifer O'Halloran	Donald Pederson	Poweshiek Mutual Insurance
William & Debra Olson	Eric & Anne Pederson	Bill & Kay Pritchard
Onthank Body & Fender	Roger & Mitzi Pederson	Donald Puls
Eleanor Osland	Perez-Valentin Family	Mary Purcell
Michelle Otto	Dennis & Jean Perri	Howard & Suzy Raffety
Linda Overturf	Terry & Kathy Peters	RAGBRAI
Cherrill Oxenford	Arlene F. Petersen	Greg & Denise Ragias
Gordon & Karen Packard	Roger & Dorothy Peterson	Jim & Wendy Ramsey
Bryan & Theresa Pagliai	John & Emily Pfitsch	Rick & Sue Ramsey
Pagliai's Pizza	James R. Phelps	Ramsey-Weeks
Dave Palmer	Phi Rho Lambda Club	Richard J. Raridon
Phillip & Dorothy Palmer	Edward & Karen Phillips	Lucille Reavis
Ruth Palmer	Christy Pifer	Samuel & Michelle Rebelsky
John & Susan Parker	Al & Dorothy Pinder	Montie & Suzanne Redenius
Larry & Debra Parker	Martha Pinder	Nicole Reding
Mark Parmenter & Lisa Jepsen	Pinder Family	Donna Reed
Paul Parmley	Marie Plain	Warren & Nancy Reinecke
Michele Parslow	Paul & Debby Pohlson	Cindy Reitz
Patriot Bank	Rich & Ashley Posel	Alice Renaud
Lorraine Patten	Ned & Reba Postels	Paul Renaud
James & Linda Paulson	Floyd & Geraldine Postma	James & Barbara Reynolds
Janis Peak	Ed & Sharon Poush	Dick & Carolyn Ritter
Joyce Peak	Jim Powers	Jim Rixen
Doris Pearce	Poweshiek County Board of	Severin Roberts
Richard & Carol Pearce	Supervisors	Jack & Diane Robertson
Heidi Pearson	Poweshiek County Board of	Rock Creek Athletics Inc.
	Realtors	

Inspired Donors

Patty Roland	Gerry & Pat Schnepf	Doug & Mary Shutts
Royal Roland	Harold & Susan Schoen	Dan & Myra Sicard
David Romano	Dion & Shelley Schrack	Steve & Mindy Sieck
John Rommereim	Barbara Schroeder	Pablo Silva & Monica
Monty Roper & Lucy Chang	Russ & Mary Schuchmann	Chavez- Silva
Chad & Kelly Rose	Harley & Deb Schull	Laura Sinnett
Larry & Twila Rosenow	Craig & Emily Schultz	Kathleen Skerrett
Chris & Jody Roudabush	Dale & Miriam Schultz	Jim & Julie Slebiska
Lyle & Carolyn Roudabush	Scrap It Plus	Skip & Helen Sly
Charles Routier	Judy Sears	Kama & Thomas Small
Rev. Katheryn & Robert Roys	Larry Sears	Daniel Smith
John & Madge Ruchotzke	Michelle Sears	David & Carol Smith
Ruchotzke & Ruchotzke LLP	Shirley A. Sears	Don A. Smith
Bill & Paula Rudolph	Searsboro Community	Dustin & Sarah Smith
Gaye Rumsey	Church	Joel & Nicolle Smith
Jodi & Paul Rusch	Second Mile	Lori Smith
Clara Ryan	Alan See	Melanie Smith
Rev. Phillip Ryan	Dale & Doris Selix	Robert D. Smith
Robert & Ruth Samson	Kevin & Sarah Seney	Smith Funeral Home
James & Barbara Saunders	St. Francis Manor	Smith Monument Company
Ken & Phyllis Saunders	Scott & Lisa Sharp	Smith, Roudabash,
Mary Saunders	Lee Sharpe & Leslie J. Lyons	Cunningham, & Miller
John & Pat Saxton	Chris & Lisa Sheets	Dennis & Ann Snook
Jordan Scheibel	Hugh Sheridan	Southard Implement
Don & Jeananne Schild	Jack Sherman	Spaulding Inn Bed &
Denise & Scott Schmidt	Deanna Shorb	Breakfast
Sheila Faye Schmidt	Craig Shore & Monique	Norma Spooner
Mark Schneider	McLay Shore	Ray Spriggs

Inspired Donors

St. John's Lutheran Church	Edith Terlouw	Erica Urfer
St. Mary's Catholic Church	Jennie Terlouw	Jim & Molly Urfer
St. Paul's Episcopal Church	Robert Terlouw	Utech Chiropractic Clinic, P.C.
Kevin & Jennifer Stallman	Vernon & Gloria Terlouw	Doris Vander Leest
Rachelle & Ann Standerwick	Albert Terpstra	Dave & Susan Vander Linden
Tom & Jo Ann Stanford	Debbie Tharp	Lois Vander Schel
State Farm Insurance	Janice Tharp	Vic & Sallie Verrette
State of Iowa	Lester & Kay Tharp	Roger & Valerie Vetter
Kathleen Steele	Maridean Tharp	Village Decorating Studio
Mary Steele	The Built Environment Inc.	Visions Hair and Body Spa
Ginger & Glenn Sterk	The Donaldson Foundation	Alan & Deanna Vogt
Timothy & Roma Stewart	The Merlin and Verna Manatt Family Foundation	Robert Vogt
M. Ann Stokka	Mark & Virginia Thelin	Glenn & Diane Volkman
Rosemary Stover	Michael Thorndike	Angela Voos
Olive Strand	Steve & Jacqueline Tielbur	Susan Vos
Ira & Susan Strauber	Dan Tindall	Pamela Vosburg
Gayle Strickler	Jeanette Tisdale	John & Joyce Wagner
Jim Strickler	Paul Tjossem & Paula Smith	Paul & Jill Wagner
Clifford & Marilyn Strovers	Total Choice Shipping	Theresa & Henry Walker
Lance & Melissa Strovers	Graphix & Printing	Waldo & Rita Walker
James & Mary Sunday	Total Rehab-Orthopedic & Sports Specialist	Katherine Wall
Louise Swart	United Church of Christ	Brenda Wallace
Jim Swartz & Cynthea Mosier	Congregational	Greg & Sherry Wallace
Thomas & Kathy Szary	University of Iowa Community Credit Union	Larry Wallace
T.L. Baker & Co LLP	Upcycle Products Inc.	Richard Warwick
Russell & Barbara Tabbert		John Watkins
David Talbott		Wilma Watkins
Jack & Marian Templeton		Sarah Wearin Smith

Inspired Donors

Clark & Karen Weaver

Doyle Weaver

James & Betty Webb

Joy & Bill D. Weeks Family

Jerome Wehr & Soraya

Rodriguez

Perry & Le Ann Wehrle

Luann & Rick Weigel

Jeff Wells & Kun-Hong Lu

Joann Wells

Wells Fargo Foundation

Robert & Kim Wemer

Karma Wemer

Wes Finch Auto Plaza

Cassie Wherry

Jim White

Mary Ellen White

Sarah White

Victor White

Wanda White

Rick & Tammy Whitney

Claudia Wicks

Larry & Linda Wilcoxson

Colleen M. Wiley

Henry, Carol, & Charlie
Wilhelm

Robert & Louise Wilkins

Wilkins & Wiederspan
Families

Brian & Terry Willemsen

Larry & Sandra Willemsen

Jennison Willet

Vincent Willey

Aaron & Jennifer Williams

Rev. Robert & Janet Williams

Jacob Willing

Catherine Wilson

Larry & Collette Wilson

Victor & Diane Wilson

Gerald Wiltse

Russell & Donna Winburn

Windstream

Tom & Ann Wingerter

William & Jean Wissmiller

Michael & Susan Witt

Gordon & Bonnie Wold

Royce Wolf

Nancy Wolff

Netia B. Worley

Blake & Irene Worth

Glynis Worthington

Chris & Sara Wray

Larry & Jo Wray

Lesley Wright & Don Doe

Olivia Wright

Lynda Wruck

Deb Yellick-Manly

Julie Young

M.J. Zimmerman

Merle W. Zirkle

Every effort has been made to ensure that this report is accurate. However, if we have made any errors, please call our office at 641.236.5518 so that we may make corrections.



Inspired Ways to Give

Unrestricted Funds

These funds provide grants to support a broad range of needs, enabling the community foundation to respond to the most pressing demands, now and in the future.

The Community Fund for Poweshiek County

Designated Funds

These funds are established by a donor or a group of donors to provide grant support to a specific non-profit organization or project. A designated fund may support, for example, the general mission of a non-profit agency, the ongoing maintenance for a building, or a specific program, all in perpetuity.

Anna Marie Emry Endowment Fund

Connie Marshall Administrative Endowment Fund

**Dr. Kevin W. Sterk Elementary Student Needs
Endowment Fund**

**Greater Poweshiek Community Foundation
Administrative Fund ***

(* non-endowed fund)

Grinnell Historical Museum Endowment Fund

**Grinnell Regional Medical Center Endowment
Fund**

**Lutheran Services in Iowa Inc. Endowment
Fund**

Endowed Agency Fund

These funds are similar to Designated Funds in that they support a specific non-profit organization or project; the difference is that these funds are established at the local community foundation by the non-profit organization itself. Non-profit agencies often view an Endowed Agency Fund as a simple and efficient way to help create sustainability and support the non-profit's mission in perpetuity.

Grinnell Area Arts Council

Grinnell-Newburg Dollars for Scholars

Grinnell-Newburg Educational Excellence (GNEE)

Imagine Grinnell

Iowa Transportation Museum

Mayflower Human Needs

Field of Interest Funds

These funds are established to support a particular area of interest such as education or community development; the community foundation's board awards grants to non-profit organizations or programs serving that purpose.

Douppnik/Hawkins Family Music Fund

Kate & Chuck DeLong Memorial Fund

Lydia Reida Science Fund

Shaeffer Award for Theater Arts

Inspired Ways to Give

Donor Advised Funds

These funds give donors the opportunity to be actively involved in the decision making process. They recommend to the community foundation board which program or agencies receive grants.

Scholarship Funds

These funds give donors or organizations the opportunity establish scholarship funds to benefit students of a particular school, educational discipline, gender, or other designation.

Adelburg Family Scholarship*

Audrey Griffith Scholarship

Audrey Petersen Scholarship

Dr. Kevin W. Sterk Scholarship

Fitzgerald Family Scholarship

Green Futures Fund

Grinnell-Newburg Dollars for Scholars Scholarship*

Hilke Family Scholarship Fund

Iowa Telecom Scholarship

John Kintzinger Memorial Scholarship

Kenneth J. Benda Scholarship

Kurth Science Scholarship

Lance Reimers Memorial Fund*

Leroy Schneider Memorial Scholarship

Lincoln Savings Bank Scholarship

McCormick Scholarship Fund*

Nathan Figland Memorial Wrestling Scholarship*

Newburg Alumni Scholarship

Nicole Kelling Memorial Scholarship

Peak Fund

Rachel & Richard Sanders Scholarship*

Reida Scholarship*

Renaud Fund*

Ronald Graham Memorial Scholarship*

Scandrett Scholarship Fund*

Sid Potts Scholarship Fund*

Wells Fargo Scholarship

Vivian G. Craig Music Scholarship *

(* endowed scholarship)

Help us grow ...

The Community Fund

For Poweshiek County

- We need your help to build a million dollars community endowment fund that will support the community needs in Greater Poweshiek County in perpetuity.
- Our goal is to get 1,000 local individuals to commit to a membership gift of \$100 per year for 10 years (\$100 x 10 x 1,000 = \$1,000,000!). For couples, that would be \$200 per year.
- Monies contributed to this fund are eligible for a 25% Endow Iowa tax credit as well as a Federal tax deduction.

Inspired Learners

2011 Dollars for Scholars Scholarships

All scholarships are \$250 unless otherwise noted.

Whitney Albertson-Indian Hills CC, Ottumwa, IA

Courtney Allen-Central College, Pella, IA

Elizabeth Anderson-Des Moines Area CC, Ankeny, IA

Regan Baker-Coe College, Cedar Rapids, IA

Trent Baker-Grinnell College, Grinnell, IA

Renee Beach-Loras College, Dubuque, IA

Jacob Beck-Kirkwood CC, Cedar Rapids, IA

Hannah Burt-**Kenneth J. and Lucille M. Benda Memorial**

Scholarship (\$500)-Grinnell College, Grinnell, IA

Macey Colombo-Iowa State University, Ames, IA

Zachary Cox-Ellsworth CC, Iowa Falls, IA

Matthew Dayton-Iowa State University, Ames, IA

Peter Dayton-Hawkeye CC, Waterloo, IA

Emily Drees-Iowa State University, Ames, IA

Jennifer Dysart-Grinnell College, Grinnell, IA

Janet Eckles-Drake University, Des Moines, IA

Molly Ellis-**Girls Camp Scholarship (\$500)**-UNI, Cedar Falls, IA

Jordan Ferch-UNI, Cedar Falls, IA

Mason Flanagan-Des Moines Area CC, Newton, IA

Nathan Ford-Wartburg College, Waverly, IA

McKenzie Foster-University of Iowa, Iowa City, IA

Claire Francis-Lawrence University, Appleton, WI

Nicolette Freeman-University of Iowa, Iowa City, IA

Julian Gallo-**ASI Scholarship (\$500)**-Loras College,

Dubuque, IA

Ethan Gogg-Grinnell College, Grinnell, IA

O'Neill Goltz-**Girls Camp Scholarship (\$500)**-UNI,

Cedar Falls, IA

Thomas Grabinski-**Scandrett Family Scholarship (\$525)**-

Grinnell College, Grinnell, IA

Matthew Guinane-Central College, Pella, IA

Brett Hall-Simpson College, Indianola, IA

Zachary Hall-Marshalltown CC., (Iowa Valley Campus),

Grinnell, IA

Crystal Havel-Marshalltown CC., (Iowa Valley Campus),

Grinnell, IA

Andrew Hayes-Northwestern College, St. Paul, MN

Zachary Hendricks-Central College, Pella, IA

Tyler Hopwood-University of Iowa, Iowa City, IA

Jessica Hotchkin-Marshalltown CC., Marshalltown, IA

Ashley Hulsing-**Leroy Schneider Memorial Scholarship**

(\$700)-Central College, Pella, IA

Holly Hunter-Hawkeye CC., Waterloo, IA

Bradley Hupp-Indian Hills CC., Ottumwa, IA

Zachary Innis-Marshalltown CC., (Iowa Valley Campus),

Grinnell, IA

Ryan Iverson-Kirkwood CC., Cedar Rapids, IA

Kyle Irland-Luther College, Decorah, IA

Amber Johnson-Simpson College, Indianola, IA

Kayla Johnson-Iowa School of Beauty, Marshalltown, IA

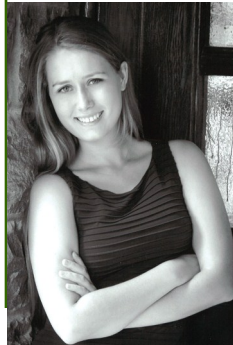
Tyler Johnson-UNI, Cedar Falls, IA

Connor Jones-**Leroy Schneider Memorial Scholarship (\$700)**

-Des Moines Area CC., Ankeny IA

Zachery Kirsch-Undecided

Kylie Jones-Buena Vista University, Storm Lake, IA



Timothy Kahl-**McCormick**

Memorial Scholarship

(\$500)-Central College,

Pella, IA

Meredith Kalkbrenner (Pictured)

-**Nicole Marie Kelling**

Scholarship(\$500)-Grinnell

College, Grinnell, IA

Inspired Learners

Tyler Keenan-Kirkwood CC., Cedar Rapids, IA

Justin Kelling-Coe College, Cedar Rapids, IA



Emily Kriegel (*Pictured*)-**Sid Potts Scholarship (\$2000)**-UNI, Cedar Falls, IA

Lindsey Kriegel-Marshalltown CC., Marshalltown, IA

Sarah Kriegel-UNI, Cedar Falls, IA

Wesley Latcham-Kirkwood CC., Cedar Rapids, IA

Jessica Leshen-Hawkeye CC., Waterloo, IA

Ryan Matherly-UNI, Cedar Falls, IA

Micaela Mertens-**Sarah Evelyn Miller Peak and Edward Bennett Peak Memorial Scholarship (\$300)**-Loras College, Dubuque, IA

Shelby Montgomery-Simpson College, Indianola, IA

Kyle Moorehead-**49er E.A. Kurth Science Award (\$300)**-Grinnell College, Grinnell, IA

Bailey Morrison-Cornell College, Mt. Vernon, IA

Alicia Mulholland-Grinnell College, Grinnell, IA

Jared Norberte-College of DuPage, Glen Ellyn, IL

Amber Oliver-Kirkwood CC., Cedar Rapids, IA

Jessica Olivier-Marshalltown CC., Marshalltown, IA

Brooklyn Phipps-Art Institute of Chicago, Chicago, IL

Kelly Pickens-Marshalltown CC., Marshalltown, IA

Skye Puls-Simpson College, Indianola, IA

Ryan Rezabek-UNI, Cedar Falls, IA

Tiffany Riddle-**Don and Alice Renaud Scholarship (\$450)**-Iowa State University, Ames, IA

Kristin Robbins (*Pictured*)-Hawkeye CC., Waterloo, IA



Leah Roland-UNI, Cedar Falls, IA

Megan Schmidt-UNI, Cedar Falls, IA

Tessa Schultz-**Dr. Kevin W. Sterk Memorial Scholarship (\$1500)**-Hope College, Holland, MI

Joseph Blake Scurr-**John Kintzinger Memorial Scholarship (\$2000)**-UNI, Cedar Falls, IA

Lauren Sharp-Central College, Pella, IA

Samuel Shill-UNI, Cedar Falls, IA

Mackenzie Skala-Indian Hills CC., Ottumwa, IA

Madison Small-Indian Hills CC., Ottumwa, IA

Matthew Smith-Kirkwood CC., Cedar Rapids, IA

Robert Smith-Drake University, Des Moines, IA

Tanner Smith-Ozark Christian College, Joplin, MO

Emily Sortor-**Vivian Craig Scholarship (\$400)**-Grinnell College, Grinnell, IA

Nick Stanford-UNI, Cedar Falls, IA

Jenna Staroska-UNI, Cedar Falls, IA

Levi Thompson-Kirkwood CC., Cedar Rapids, IA

Nora Tjossem-**Wells Fargo Scholarship (\$500)**-Stanford University, Palo Alto, CA

Kyle Van Dee-Des Moines Area CC., Newton, IA

Jason Van Ervelde-Kirkwood Community College

Justin Vaverka-**Lydia Reida Scholarship (\$1,100)**-Grinnell College, Grinnell, IA

Benjamin Wallace-UNI, Cedar Falls, IA

Nicole Ward-Des Moines Area CC., Ankeny, IA

Charles Wilhelm-**Lincoln Savings Bank (\$500)**-Grinnell College, Grinnell, IA

Jacob Willis-Hawkeye CC., Waterloo, IA

Kalen Winburn-Marshalltown CC., (Iowa Valley Campus), Grinnell, IA

Total Amount of Scholarships Awarded in 2011: \$32,225

Inspired Gifts

Consider giving back to the community where you lived and prospered... The Greater Poweshiek Community Foundation welcomes contributions of any kind, in any amount. Gifts may be made during one's lifetime, or through a bequest or trust. By including your hometown in your estate plan, you leave more behind than money. ..you plant the seed for opportunity for generations to come.

DIRECT GIFTS	PLANNED GIFTS
Cash	Bequest in a Will
Securities	Retirement Plan Assets
Real Estate	Private Foundation Transfer of Assets
Life Insurance	Charitable Remainder Trust/Charitable Lead Trust

Each individual, family, or organization we work with has the unique charitable interests and unique financial circumstances. We help you make the most of both, so you receive the greatest return on your community investment. Gifts may be directed to an existing fund or you may establish a new fund.

Gift of Grain Program

Farmers wanting to contribute to good causes through GPCF have the option to give bushels of grain through the gifts of grain program. Gifting grains is better than writing a check to your favorite charity because there are significant tax benefits of gifting grain instead of cash. This is because donated grain is not recorded as income but as cash basis and a farmer can still deduct the cost of growing the crop which results in saving self employment tax, federal income tax and state income tax. Furthermore, farmers can donate grains grown this year or in the previous year's harvest.

Several critical steps must be taken when grain is delivered to an elevator. First, a storage receipt must be issued in the name of the Greater Poweshiek Community Foundation as evidence that grain ownership was transferred from the producer to the foundation. Second, a contract to sell the grain must be sent to the foundation for a signature. The contract can be mailed or faxed. Third, since GPCF owns the grain, producers should not instruct the elevator to sell it. Finally, when the foundation sells the grain on the spot market, which is the policy, the elevator staff must issue the check to GPCF.

Gifts of grain given through the foundation can be designated for one or more local causes. There are more than 80 funds at the 23-year-old foundation and a donor can even set up a new designated fund with a gift of \$10,000 or more.

Inspired by *Your Trust*

Statements of Financial Position

Current Assets:	<u>2011</u>	<u>2010</u>
Cash & equivalents	\$ 803,882	1,027,459
Promises to give, net of allowance of \$75,000 & 80,000 at December 31, 2011 & 2010, respectively	710,955	619,293
Interest Receivable	8,390	8,390
Notes receivable—stock sales	<u>40,071</u>	<u>80,102</u>
Total current assets	<u>1,563,298</u>	<u>1,735,244</u>
Other Assets:		
Long-term investments	1,729,346	1,212,413
Promises to give	563,742	711,933
Beneficial interest in charitable remainder trusts	<u>932,815</u>	<u>1,020,584</u>
Total other assets	<u>3,225,903</u>	<u>2,985,001</u>
Total assets	\$ <u>4,789,201</u>	<u>4,720,245</u>
<u>Liabilities & Net Assets as of December 31, 2010</u>		
Current liabilities:		
Accounts payable	\$ 32,646	49,568
Payroll liabilities	1,437	1,220
Payable to beneficiaries	<u>656,425</u>	<u>666,557</u>
Total current liabilities	<u>690,508</u>	<u>717,345</u>
Long-term liabilities:		
Payable to beneficiaries	<u>718,771</u>	<u>1,142,211</u>
Agency Funds	96,232	—
Total liabilities	<u>1,505,511</u>	<u>1,859,556</u>
Net assets:		
Unrestricted net assets	2,204,759	24,271
Temporarily restricted net assets	1,078,391	2,085,865
Permanently restricted net assets	<u>—</u>	<u>750,553</u>
Total net assets	<u>3,283,690</u>	<u>2,860,689</u>
Total liabilities & net assets	\$ <u>4,789,201</u>	<u>4,720,245</u>

IRS Form 990, GPCF Annual Audit, and Investment Policy & Procedures are available upon request.

*We **grow** community
through your giving.*

The Greater Poweshiek Community
Foundation Board of Directors, staff,
and partner organizations thank you for
your generosity and support.

You Inspire Us!



Thank you!